

WINTER OF ANIMALS

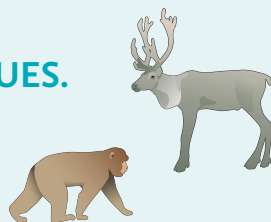
Classes
1-2

WHAT DO ANIMALS DO IN WINTER?

GO AND EXPLORE, FOR EXAMPLE, THE CAT VALLEY. ALSO TAKE A LOOK AT THE FOREST REINDEER, WILD HORSES, BARBARY MACAQUES, SNOWY OWLS, AND CAMELS.

1 MATCH THE ANIMALS AND CLUES.

A LONG, THICK TAIL PROTECTS
FROM THE COLD LIKE A SCARF



DIGS LICHEN FROM UNDER THE SNOW;
HOOVES LIKE SNOW SHOVELS

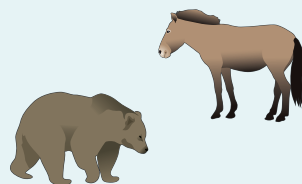


FAT STORED IN HUMPS AS RESERVE FOOD

SPENDS THE WINTER HIBERNATING

EATS A LOT OF DRY HAY IN WINTER

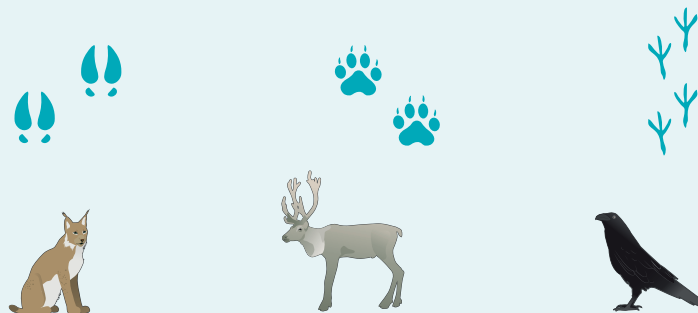
SPENDS PART OF THE WINTER IN A WARM INDOOR SPACE



2 THINK: WHY THERE ARE NO ELEPHANTS OR GIRAFFES AT KORKEASAARI ZOO?

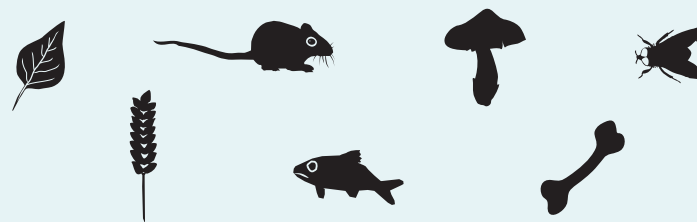
3 CAN YOU FIND TRACKS IN THE SNOW?

MATCH THE ANIMALS WITH THEIR TRACKS.



WALK IN THE SNOW. WHAT KIND OF TRACKS DO YOU LEAVE?

4 WHAT FOOD CAN ANIMALS FIND IN WINTER? CIRCLE.



5 WHAT DO FAMILIAR WILD ANIMALS DO IN THE CITY DURING WINTER? HOW DO PEOPLE COPE WITH THE COLD?

DRAW OR WRITE YOUR ANSWER ON THE BACK OF THE PAPER.